

# Proud Mary

## Bass Transcription

Ike & Tina Turner (original by CCR)

Proud Mary (1971)

Rock-'n-Roll/Soul, ♩=96

### Intro (spoken)

D

D

On cue



### Vocals

7 **A** D

D

D

D



*Left a good job in the city...*

11 D

D

D

D

D/F#

D/G

D/G#



15 A

D

Bm

G



19 D

D

D

D



23 **B** D

D

D

D



27 D

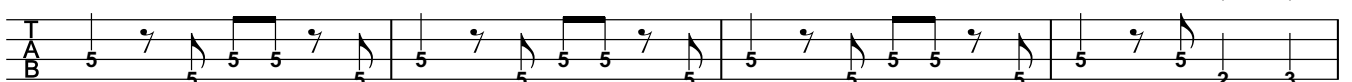
D

D

D

D/F#

D/G



31 A

D

Bm

G



35 D

D

D

D



39 D

D

D

D



*Ritenuato...*

2 **C** Up-Tempo! ♩=176

43 D

5 5 5 5 5 5 5 5 | 5 5 5 5 5 5 5 5 | 5 5 5 5 5 5 5 5 | 5 5 5 5 5 5 5 5

47 D

5 5 5 5 5 5 5 5 | 5 5 5 5 5 5 5 5 | 5 5 5 5 5 5 5 5 | 5 5 5 5 5 5 5 5

**D** Vocals

51 D

5 5 5 5 5 5 5 5 | 5 5 5 5 5 5 5 5 | 5 5 5 5 5 5 5 5 | 5 5 5 5 5 5 5 5

55 D

5 5 5 5 5 5 5 5 | 5 5 5 5 5 5 5 5 | 5 5 5 5 5 5 5 5 | 5 5 4 4 5 5 6 6

59 A Bm

7 7 5 7 5 7 7 7 | 5 7 5 7 5 7 7 7 | 9 9 7 9 7 9 7 9 | 9 7 7 9 9 7 5

63 D

5 5 7 5 5 7 5 5 | 5 5 7 5 5 7 5 5 | 5 5 7 5 5 7 5 5 | 5 5 7 5 5 7 5 5

67 D

5 5 7 5 5 7 5 5 | 5 5 7 5 5 7 5 5 | 5 5 7 5 5 7 5 5 | 5 5 7 5 5 7 5 5

71 D C Am

7 7 7 7 7 7 7 7 | 7 7 7 7 7 7 7 7 | 7 7 7 7 7 7 7 7 | 3 7 5 7 7 7 5 7

75 C Am G F F G D

3 7 5 7 7 7 5 7 | 3 7 5 7 7 7 5 7 | 7 3 7 5 3 5 7 5 | 5 5 5 5 5 5 5 5

79

5 5 5 5 5 5 5 5 | 5 5 5 5 5 5 5 5 | 5 5 5 5 5 5 5 5 | 5 5 5 5 5 5 5 5

Vocals

82 **E** D / C > D /

86 D / / /

90 A Bm / /

94 D / / /

98 D / / /

102 D / / C Am

106 C Am C Am G F / F G D7

110 / / /

Vocals

113 D / C > D /

117 D / / /

121 A7 Bm

125 D

129 D

133 D C Am

137 C Am G F F G D

141

**G** **Outro**  
144 D

148 D

152 D

Fade out...

156 D